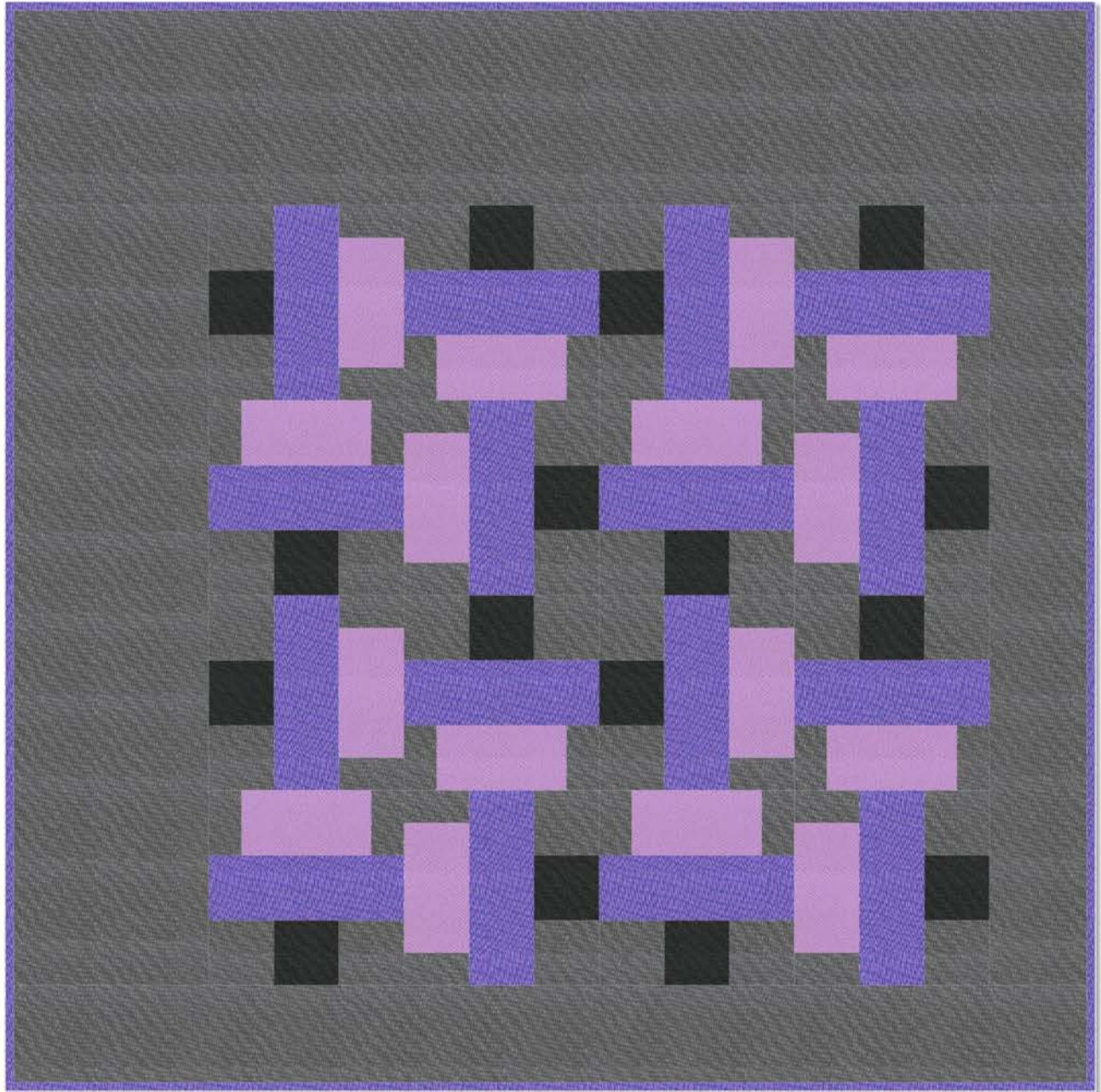


# *Spiral Bound*

Designed by Kristy Daum

Featuring Another Point of View's Artisan Cotton Collection

SIZE: 66" x 66"



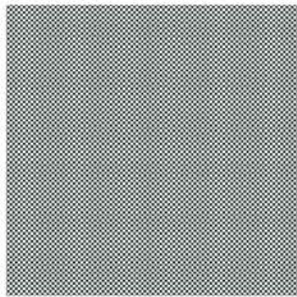
**PLEASE NOTE:** QUILT IMAGE SHOWN IS A DIGITAL REPRESENTATION, FABRIC LOOK MAY VARY ON YOUR PROJECT.  
VISIT OUR *FREE PROJECT* SECTION ONLINE FOR ANY PATTERN UPDATES BEFORE STARTING QUILT PROJECT.



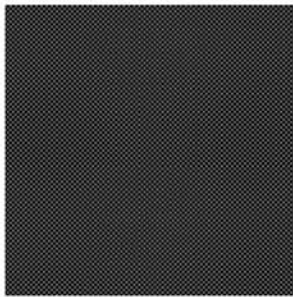
WINDHAM FABRICS

# Spiral Bound

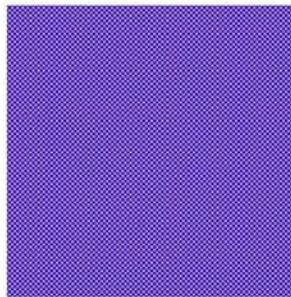
Page 2



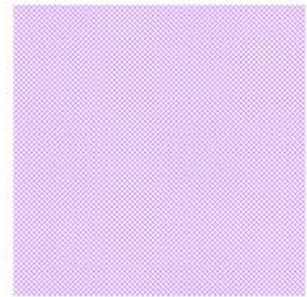
40171- 1 Charcoal.White



40171- 2 Black-Grey



40171-12 Blue-Orchid



40171-21 Orchid-White

SKU / COLOR	YDS
40171-21	5/8
40171-12	7/8
40171-12 (Binding)	1/2

SKU / COLOR	YDS
40171-1	2 1/2
40171-2	3/8
Backing	3 3/4

## Before You Begin:

- Read through all directions first
- All seam allowances are a scant 1/4"
- RST stands for "Right Sides Together"
- WOF stands for "Width of Fabric"
- Fabric requirement assumes 40" between selvages
- Extra fabric will be required if using directional prints or if pre-washing your fabric

## Cutting Instructions (Blocks)

### 40171-21 Orchid/White (*Fabric AA*)

- Cut (4) 4 1/2" x WOF strips, sub-cut each into (4) 4 1/2" x 8 1/2" rectangles for a total of (16).

### 40171-12 Blue/Orchid (*Fabric BB*)

- Cut (6) 4 1/2" x WOF strips, from five of the strips, sub-cut (3) 4 1/2" x 12 1/2" rectangles; from the remaining WOF strip cut (1) 4 1/2" x 12 1/2" rectangle for a total of (16).

### 40171-2 Black/Grey (*Fabric CC*)

- Cut (2) 4 1/2" x WOF strips, sub-cut each into (8) 4 1/2" x 4 1/2" squares for a total of (16).

### 40171-1 Charcoal/White (*Fabric DD*)

- Cut (4) 4 1/2" x WOF strips, sub-cut each into (8) 4 1/2" x 4 1/2" squares for a total of (32).
- Cut (4) 2 1/2" x WOF strips, sub-cut each into (8) 2 1/2" x 4 1/2" rectangles for a total of (32).



# Spiral Bound

Page 3

## Cutting Instructions (Borders)

40171-1 Charcoal/White (*Fabric DD*)

- Cut (3) 12 1/2" x WOF strips
- Cut (3) 6 1/2" x WOF strips

## Piecing The Block:

1. Following the diagram, sew RST (1) 4 1/2" x 4 1/2" *Charcoal/White* square to either side of (1) 4 1/2" x 4 1/2" *Black/Grey* square. Press.



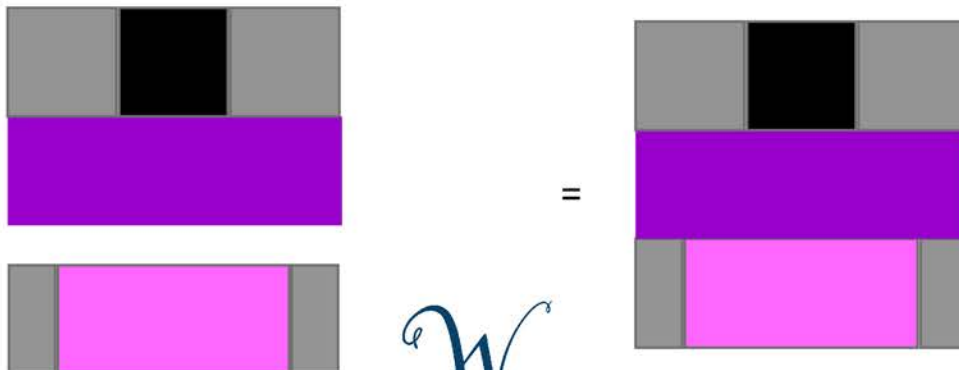
2. Sew the unit you created in Step 1 to the long side of (1) 4 1/2" x 12 1/2" *Blue/Orchid* rectangle as shown. Press.



3. Sew (1) 2 1/2" x 4 1/2" *Charcoal/White* square to either side of (1) 4 1/2" x 8 1/2" *Orchid/White* rectangle. Press.



4. Sew the unit you created in Step 3 to the other long side of the unit created in Step 2. Press.



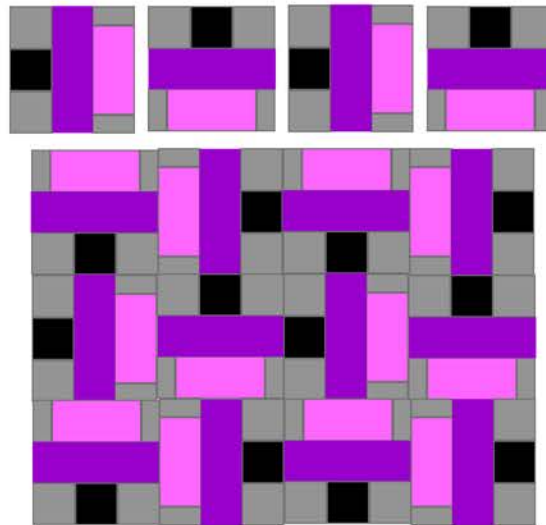
# Spiral Bound

Page 4

5. Repeat the above steps fifteen more times for a total of (16) blocks. Chain-piecing works well here.

## Laying Out The Blocks & Sewing Rows:

- Following the diagram, lay out the blocks ensuring that you rotate them as shown.
- Sew the blocks RST one row at a time. Press.
- Repeat the steps above until all four rows are sewn. Press.



## Piecing the Borders:

- Take (1) 6 1/2" x WOF *Charcoal/White* strip and cut (1) 6 1/2" x 10" length and (1) 6 1/2" x 28" length, put the 28" length aside temporarily.
- To make the right border, take (1) 6 1/2" x WOF *Charcoal/White* strip and sew it RST along the short side with the 6 1/2" x 10" length cut in the previous step. Press. Sew this border; which is purposely a little long then needed, along the right side of the quilt top. Press and square up this border.
- Take (1) 12 1/2" x WOF *Charcoal/White* strip and cut (1) 10" x 12 1/2" length and (1) 12 1/2" x 28" length, put the 28" length aside temporarily.
- To make the left border, take (1) 12 1/2" x WOF *Charcoal/White* strip and sew it RST along the short side with the 10" x 12 1/2" length cut in the previous step. Press. Sew this border; which is purposely a little longer then needed, along the left side of the quilt top. Press and square up this border.

# *Spiral Bound*

## Page 5

- To make the bottom border, take (1) 6 1/2" x WOF *Charcoal/White* strip and sew it RST along the short side with the 6 1/2" x 28" length that was held aside. Press. Sew this border; which is purposely a little longer than needed, along the bottom of the quilt top. Press and square up this border.
- To make the top border, take (1) 12 1/2" x WOF *Charcoal/White* strip and sew it RST along the short side with the 12 1/2" x 28" length that was held aside. Press. Sew this border; which is purposely a little longer than needed, along the top of the quilt top. Press and square up the whole quilt.

### **Finishing The Quilt:**

- Due to the size of the quilt, you will need to piece the back. Please be sure to leave a minimum of 4" excess on all sides for ease of quilting.
- Press your quilt top and backing, so they are wrinkle-free and flat.
- Layer your quilt top, batting and backing.
- Baste.
- Quilt as desired.
- Bind the quilt using your favorite method.